

ELECTRIC HEATER SCHEDULE

SYM.	TYPE	BTU	KW	CHAR	CONTROL	REMARKS
EH 1	WALL MOUNTED	6,830	2.0	120/60/1	INTEGRAL	QMARK MODEL HT150255 WALL HEATER WITH RECESSED BRACKET AND INTEGRAL T-STAT
EH 2	WALL MOUNTED COVE HEATER	2,554	0.75	208/60/1	WALL T-STAT	QMARK MODEL RCCT508C 51" LONG COVE HEATER WITH MOUNTING BRACKETS AND WALL T-STAT

ROOF TOP HEATING & AIR CONDITIONING UNIT SCHEDULE

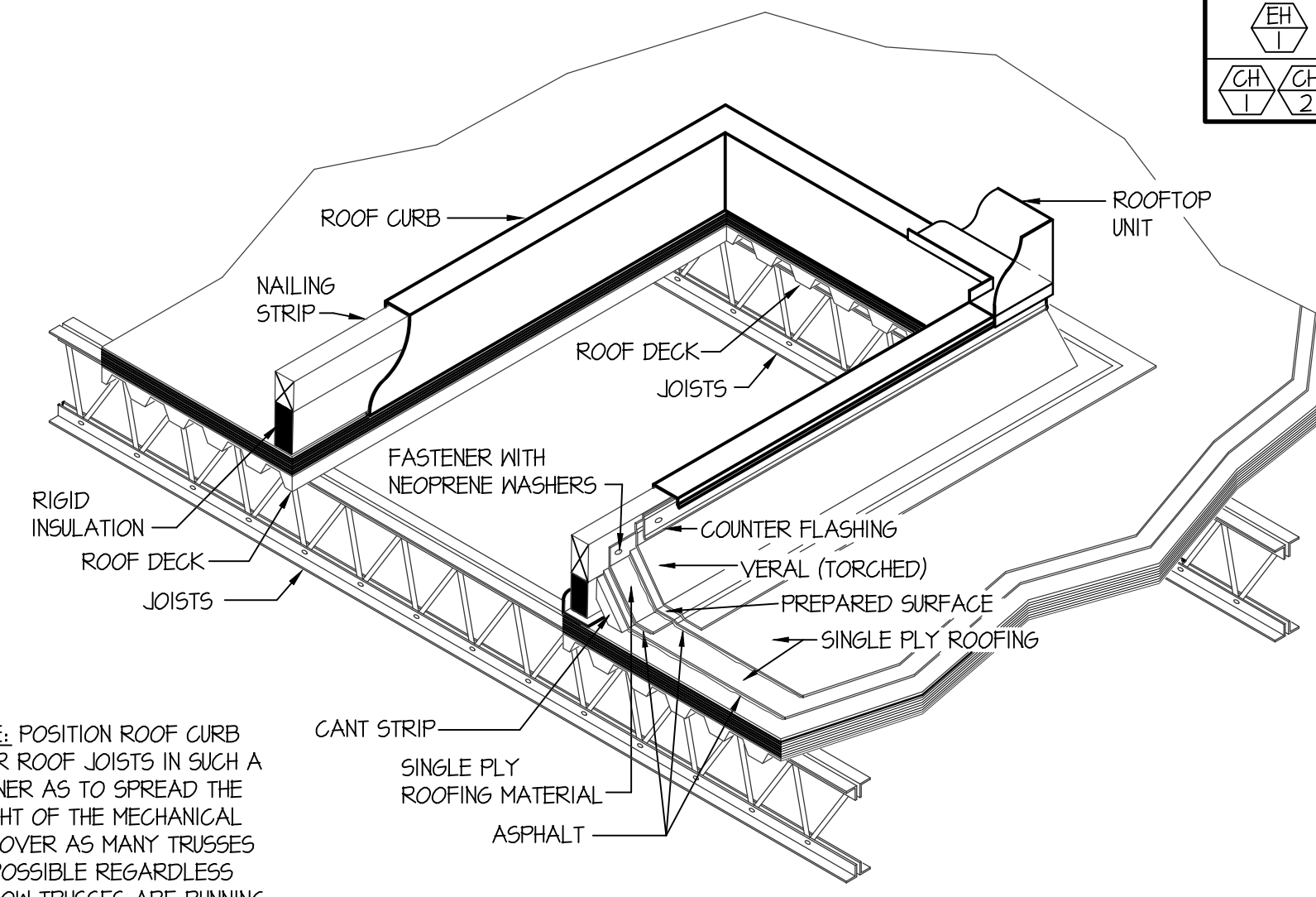
SYM.	CFM	OUTSIDE AIR REQUIRED	S.P.	BLOWER HP.	CHAR	MCA	WEIGHT	GAS CONN	HEATING		COOLING		REMARKS			
									BTU IN	BTU OUT	EAT	LAT		MEH	EAT	MEB
RT 1	1200	175	0.7"	1.5	208/60/3	21.0	70#	1/2"	65,000	52,000	65°F	104°F	37.5	80°F	62°F	LENNOX K6B03654B WITH FACTORY ROOF CURB AND ECONOMIZER.
RT 2	2400	300	0.7"	1.5	208/60/3	32.0	81#	3/4"	150,000	120,000	65°F	104°F	72.0	80°F	62°F	LENNOX K6B07454B WITH FACTORY ROOF CURB AND ECONOMIZER.
RT 3	1200	175	0.7"	1.5	208/60/3	21.0	70#	1/2"	65,000	52,000	65°F	104°F	37.5	80°F	62°F	LENNOX K6B03654B WITH FACTORY ROOF CURB AND ECONOMIZER.
RT 4	2400	300	0.7"	1.5	208/60/3	32.0	81#	3/4"	150,000	120,000	65°F	104°F	72.0	80°F	62°F	LENNOX K6B07454B WITH FACTORY ROOF CURB AND ECONOMIZER.

EXHAUST FAN SCHEDULE

SYM.	TYPE	C.F.M.	S.P.E.	WATTS	CHAR.	R.P.M.	CONTROL	REMARKS
EF 1	CEILING MOUNTED	100	0.25	100	120/60/1	750	SWITCH SEE ELEC.	BROAN LOSONE SELECT MODEL L100 WITH BACKDRAFT DAMPER. 10x4 EXHAUST DUCT TO WALL CAP
EF 2	CEILING MOUNTED	150	0.25	100	120/60/1	750	SWITCH SEE ELEC.	BROAN LOSONE SELECT MODEL L150 WITH BACKDRAFT DAMPER. 10x4 EXHAUST DUCT TO WALL CAP
EF 3	CEILING MOUNTED	100	0.25	100	120/60/1	750	OC. SENSOR	BROAN LOSONE SELECT MODEL L100 WITH BACKDRAFT DAMPER. 10x4 EXHAUST DUCT TO FLAT ROOF CAP
EF 4	CEILING MOUNTED	100	0.25	100	120/60/1	750	OC. SENSOR	BROAN LOSONE SELECT MODEL L100 WITH BACKDRAFT DAMPER. 10x4 EXHAUST DUCT TO WALL CAP
EF 5	CEILING MOUNTED	200	0.25	166	120/60/1	750	COOLING T-STAT	BROAN LOSONE SELECT MODEL L200 WITH BACKDRAFT DAMPER. 10x4 EXHAUST DUCT TO WALL CAP
EF 6	CEILING MOUNTED	100	0.25	100	120/60/1	750	OC. SENSOR	BROAN LOSONE SELECT MODEL L100 WITH BACKDRAFT DAMPER. 10x4 EXHAUST DUCT TO WALL CAP
EF 7	CEILING MOUNTED	150	0.25	100	120/60/1	750	SWITCH SEE ELEC.	BROAN LOSONE SELECT MODEL L150 WITH BACKDRAFT DAMPER. 10x4 EXHAUST DUCT TO FLAT ROOF CAP
EF 8	CEILING MOUNTED	150	0.25	100	120/60/1	750	SWITCH SEE ELEC.	BROAN LOSONE SELECT MODEL L150 WITH BACKDRAFT DAMPER. 10x4 EXHAUST DUCT TO WALL CAP
EF 9	CEILING MOUNTED	100	0.25	100	120/60/1	750	OC. SENSOR	BROAN LOSONE SELECT MODEL L100 WITH BACKDRAFT DAMPER. 10x4 EXHAUST DUCT TO WALL CAP
EF 10	CEILING MOUNTED	100	0.25	100	120/60/1	750	SWITCH SEE ELEC.	BROAN LOSONE SELECT MODEL L100 WITH BACKDRAFT DAMPER. 10x4 EXHAUST DUCT TO WALL CAP
EF 11	CEILING MOUNTED	100	0.25	100	120/60/1	750	SWITCH SEE ELEC.	BROAN LOSONE SELECT MODEL L100 WITH BACKDRAFT DAMPER. 10x4 EXHAUST DUCT TO WALL CAP
EF 12	CEILING MOUNTED	100	0.25	100	120/60/1	750	SWITCH SEE ELEC.	BROAN LOSONE SELECT MODEL L100 WITH BACKDRAFT DAMPER. 10x4 EXHAUST DUCT TO WALL CAP

GRILLE AND REGISTER SCHEDULE

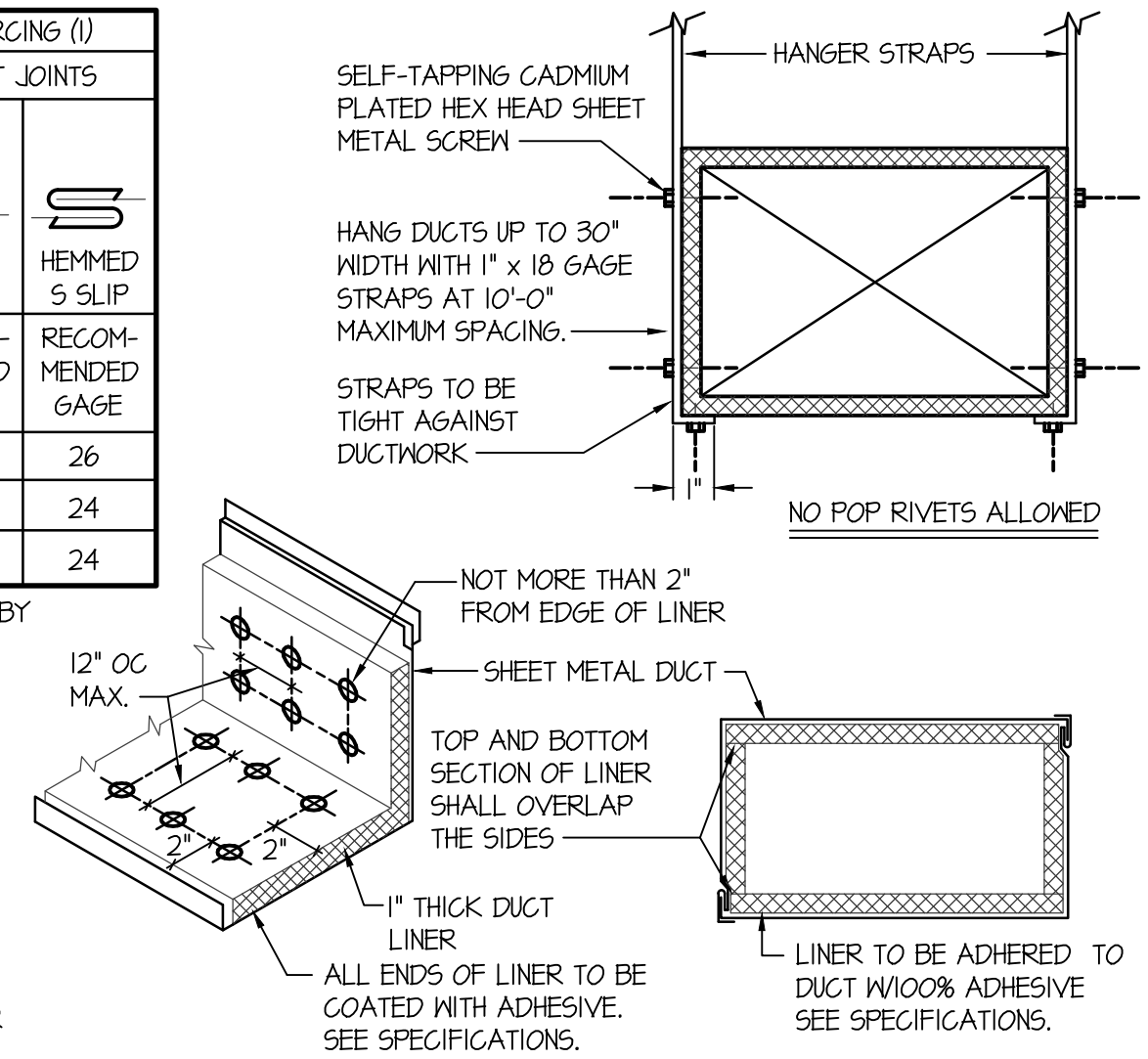
SYM.	TYPE	SIZE	CFM RANGE	THROW PATTERN	CONSTR.	FINISH	BALANCING DAMPER	FIRE DAMPER	REMARKS
D-1	CEILING	6x6	50-110	▶	STEEL	WHITE	NA	NA	PRICE MODEL SMD WITH BEVELED FRAME
D-2	CEILING	9x9	110-280	▶	STEEL	WHITE	NA	NA	PRICE MODEL SMD WITH BEVELED FRAME
D-3	CEILING	9x9	110-280	▶	STEEL	WHITE	NA	NA	PRICE MODEL SMD IN 24x24 LAY-IN MODULE
D-4	CEILING	9x9	110-280	▶	STEEL	WHITE	NA	NA	PRICE MODEL SMD IN 24x24 LAY-IN MODULE
D-5	CEILING	9x9	110-280	▶	STEEL	WHITE	NA	NA	PRICE MODEL SMD IN 24x24 LAY-IN MODULE
D-6	CEILING	9x9	110-280	▶	STEEL	WHITE	NA	NA	PRICE MODEL SMD IN 24x24 LAY-IN MODULE
D-7	CEILING	12x12	285-450	▶	STEEL	WHITE	NA	NA	PRICE MODEL SMD WITH BEVELED FRAME
S-1	HIGH SIDEWALL	12x8	150	NA	STEEL	WHITE	NA	NA	PRICE MODEL 520 D WITH FLANGE FRAME
R-1	CEILING	10x10	100-300	NA	STEEL	WHITE	NA	NA	PRICE MODEL 535 IN 24x24 LAY-IN MODULE
R-2	CEILING	16x16	450-700	NA	STEEL	WHITE	NA	NA	PRICE MODEL 535 IN 24x24 LAY-IN MODULE
R-3	LOW SIDEWALL	14x14	340	NA	STEEL	WHITE	NA	NA	PRICE MODEL 535
FFU	FAN FORCED FILTER UNIT	24x24	170	▶	STEEL	WHITE	NA	NA	SAM 22 M5 65 2x2 WITH 8" DUCT COLLAR ADAPTER, 2X2 CRF ALUM. GRILLE, 4 FRAME, HEPA FILTER 302201, AND 514C CONTROL PACKAGE TO MATCH POSITIVE 0.02 INCH WATER COLUMN. 120/60/1 VOLT POWER AT 185 WATTS.



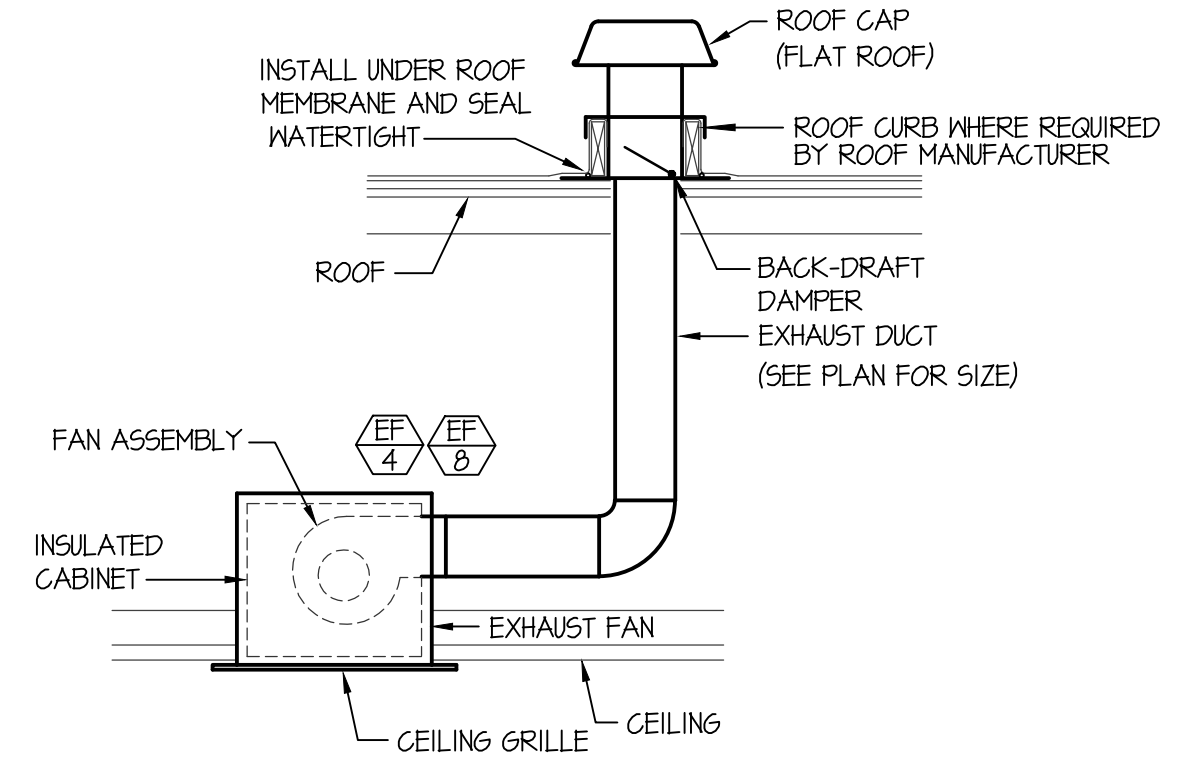
TYPICAL ROOFTOP MOUNTING DETAIL
NO SCALE

DIMENSION OF LONGEST SIDE, INCHES	SHEET METAL GAGE (ALL FOUR SIDES)	TRANSVERSE REINFORCING (1)	
		MINIMUM REINFORCING ANGLE SIZE AND MAXIMUM LONGITUDINAL SPACING BETWEEN TRANSVERSE JOINTS #/OR INTERMEDIATE REINFORCING	AT JOINTS
UP THRU 12	26	NONE REQUIRED	26 26
13 - 18	24	NONE REQUIRED	24 24
19 - 30	24	1"x11/8" @ 60 IN	- 24

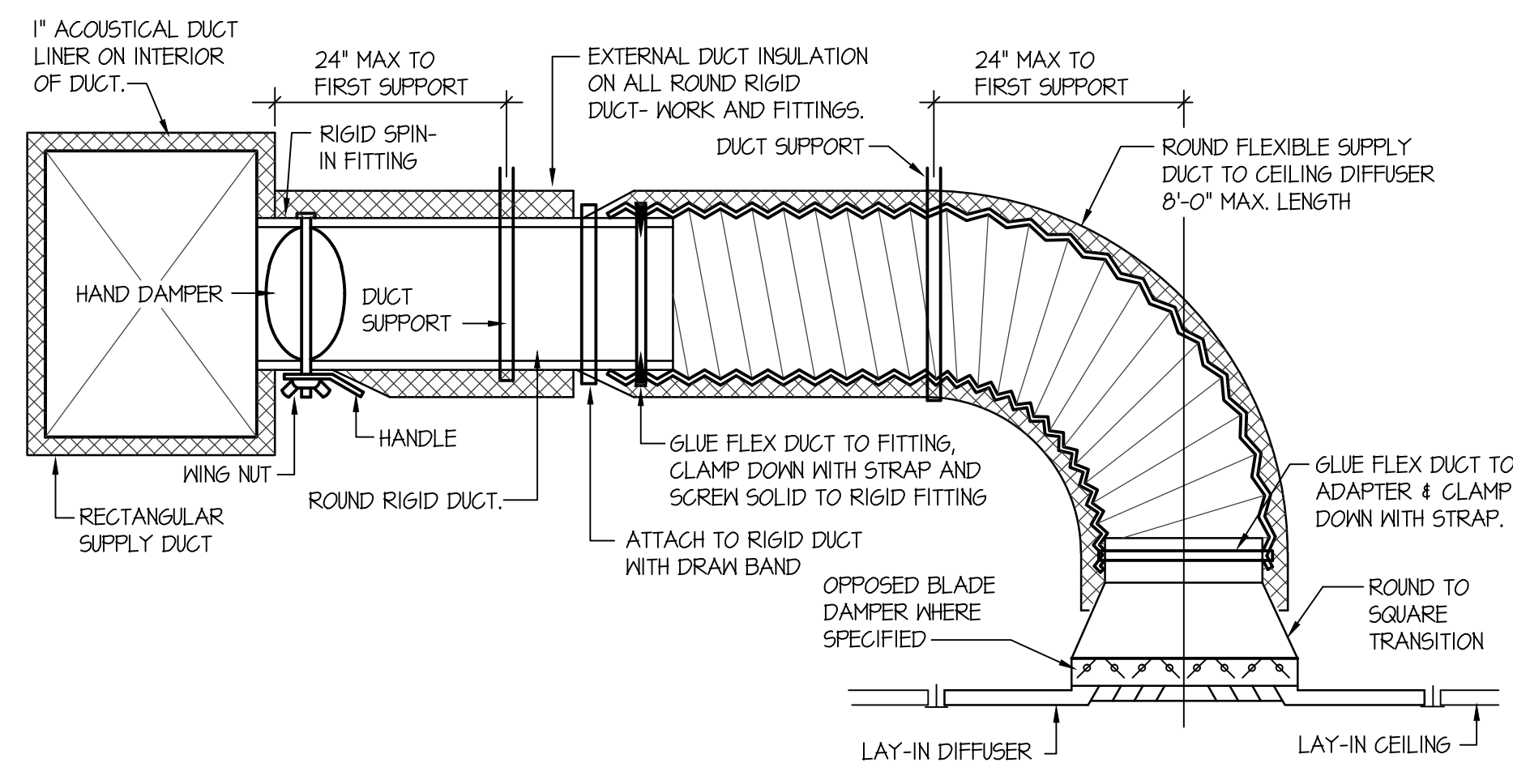
(1) TRANSVERSE REINFORCING SIZE IS DETERMINED BY DIMENSION OF SIDE TO WHICH ANGLE IS APPLIED.
METAL FASTENERS - OMARK INSULPING, DURO DYNE FASTENERS OR GRIPNAILS.
GRIP NAILS SHALL BE INSTALLED BY GRIPNAIL AIR HAMMER OR BY AUTOMATIC FASTENER EQUIP.
ENDS OF LINER SHALL BE BUTTED FIRMLY TOGETHER



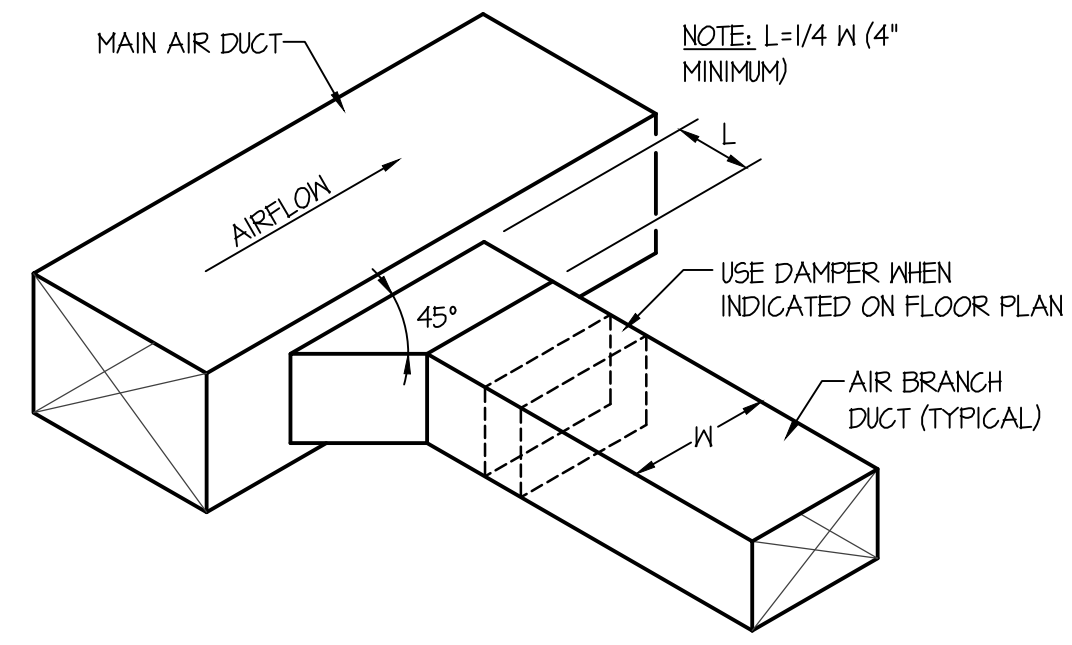
DUCT CONSTRUCTION AND HANGER DETAIL
NO SCALE



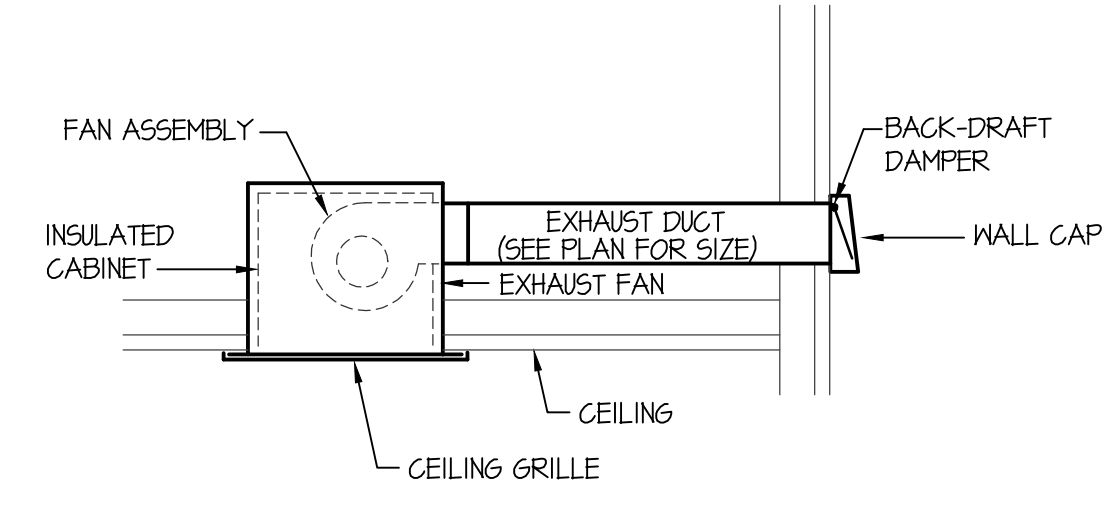
CEILING MOUNTED EXHAUST FAN DETAIL
NO SCALE



CEILING DIFFUSER DETAIL WITH FLEXIBLE DUCT
NO SCALE



RECTANGULAR DUCT CONNECTION DETAIL
NO SCALE



CEILING MOUNTED EXHAUST FAN DETAIL
NO SCALE

ORIGINAL DRAWING SIGNED BY: DWAYNE C. SUDWEEKS
DATE ORIGINAL SIGNED: FEB. 26, 2019
ORIGINAL ON FILE AT ENGINEERED SYSTEMS ASSOCIATES
1355 EAST CENTER, POCAATELLO, IDAHO 83201

Engineered Systems Associates
1355 EAST CENTER
POCAATELLO, IDAHO 83201
PHONE: (208) 233-0501
FAX: (208) 233-0529
EMAIL: eso@engsystems.com
ESA JOB NUMBER: 18097

PROFESSIONAL ENGINEER REGISTERED
5762
DWAYNE C. SUDWEEKS
STATE OF IDAHO